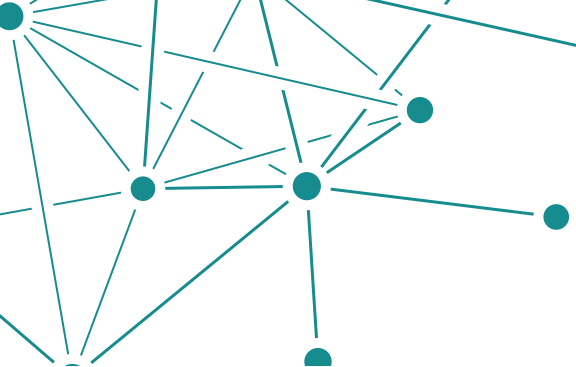




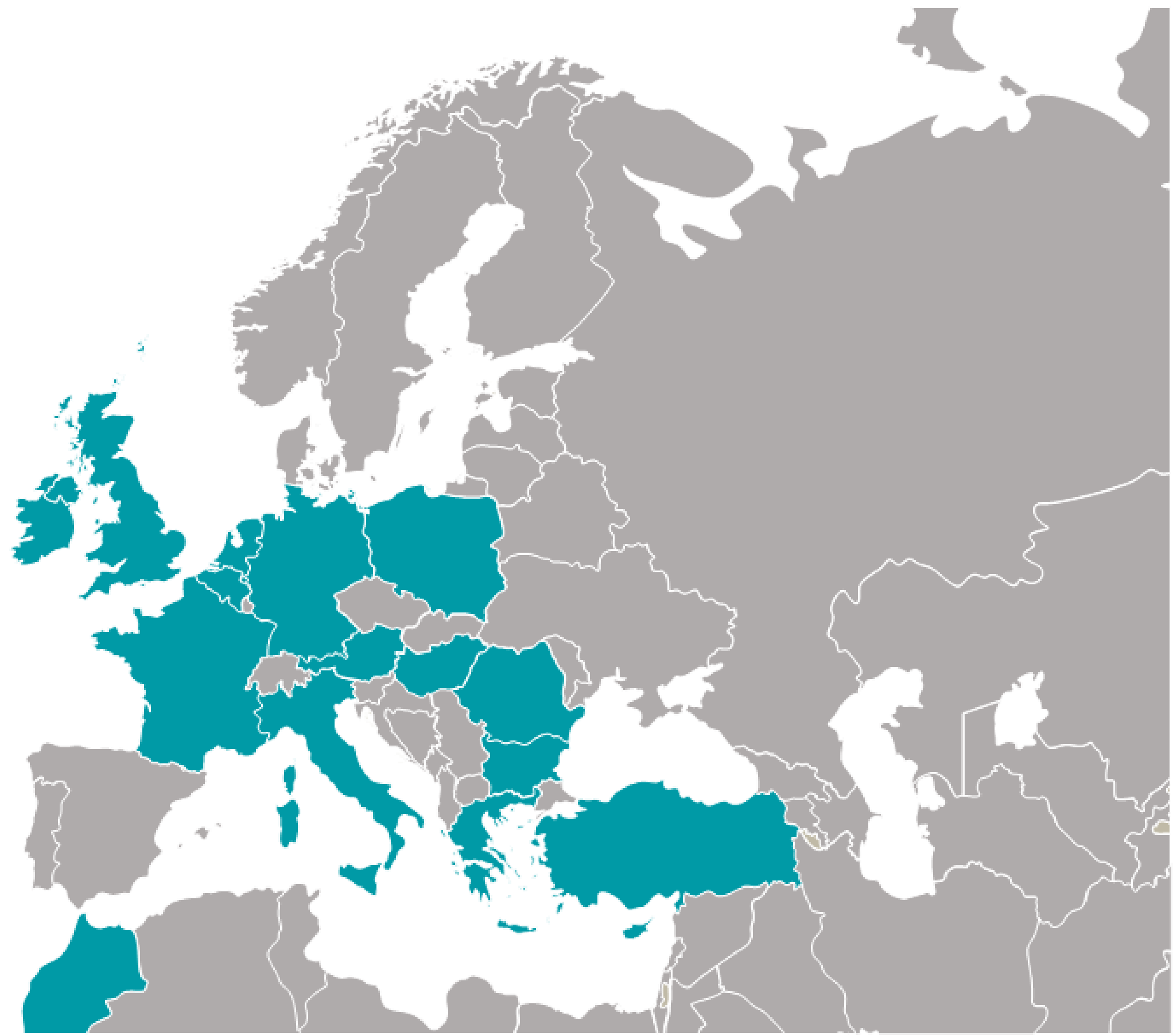
eurisy  
ACTING COLLECTIVELY TO  
BRIDGE SPACE AND SOCIETY

# Space4Maritime





# Members

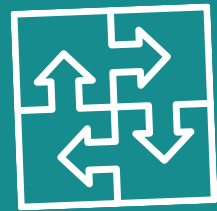


# Approach



*Facilitator* → EXPLORE

Raise awareness of satellite applications to help professional communities in many sectors: from transport to risk management, from habitat protection to energy, from climate change to the IoT.



*Matchmaker* → CONNECT

Support potential end users of satellite applications by leveraging its vast network among space and non-space communities; understanding patterns and links and/or creating them for mutual benefits.

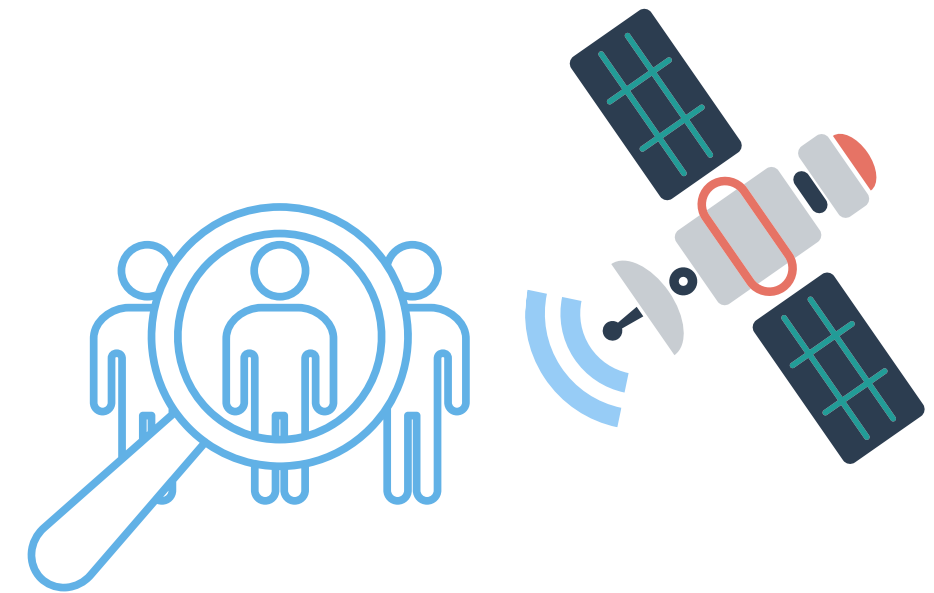


*Adviser* → INFORM

Provide feedback to decision-makers on possible measures to overcome obstacles in diffusing space-derived innovation in society.

# Objectives

- Identify maritime users' needs and challenges and favour their interaction with service providers;
- Raise awareness on the benefits of satellite-based solutions for diverse professional communities'
- Report back to institutions feedback on users' needs and define recommendations on obstacles in uptake





# EURISY Support to ESA BWTF

CO-ORGANISED BY



## THE CHALLENGES OF THE BLUE WORLD WEBINAR SERIES

Marine Living Resources

February 18th - 22nd - 25th, 2021

17-18 PM CET



# ESA BWTF-EURISY Webinar Series

## The Webinar

Identification of the needs and challenges of maritime stakeholders and the concrete uses of satellite data and services

## Topics

**Marine Resources Exploitation:** aquaculture; fishery; illegal fishing

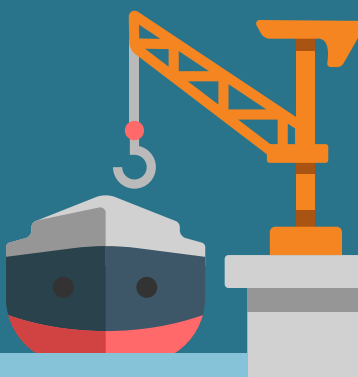
**Secure Transports and Communication:** connectivity, autonomous shipping, logistics (focus on the shipowners' experience);

**Maritime Spatial Planning:** coastal protection, renewable energy, and port development;

## Logistics

The direct link to the survey will be shared on the chat!

We will gather all your questions in the chat and pose it to our speakers!



eurisy  
ACTING COLLECTIVELY TO  
BRIDGE SPACE AND SOCIETY

Find us:



[www.eurisy.eu](http://www.eurisy.eu)