



Space4Maritime

The Challenges of the blue World - webinar series

Annalisa Donati

EURISY Support to ESA BWTF

CO-ORGANISED BY



THE CHALLENGES OF THE BLUE WORLD WEBINAR SERIES

Secure transports and communications

February 22nd - 25th, 2021

17-18 PM CET

ESA BWTF-EURISY Webinar Series

The Webinar

Identification of the needs and challenges of maritime stakeholders and the concrete uses of satellite data and services

Topics

Marine Resources Exploitation: aquaculture; fishery; illegal fishing

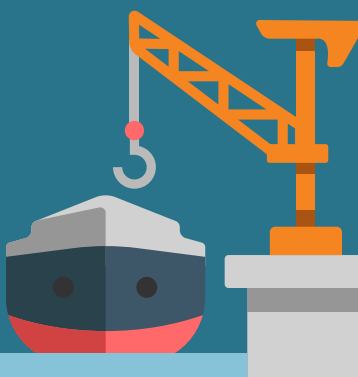
Secure Transports and Communication: connectivity, autonomous shipping, logistics (focus on the shipowners' experience);

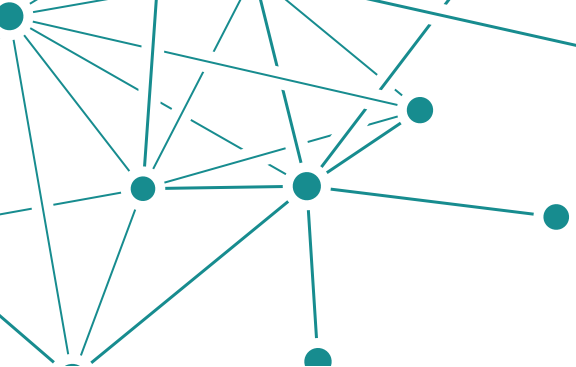
Maritime Spatial Planning: coastal protection, renewable energy, and port development;

Logistics

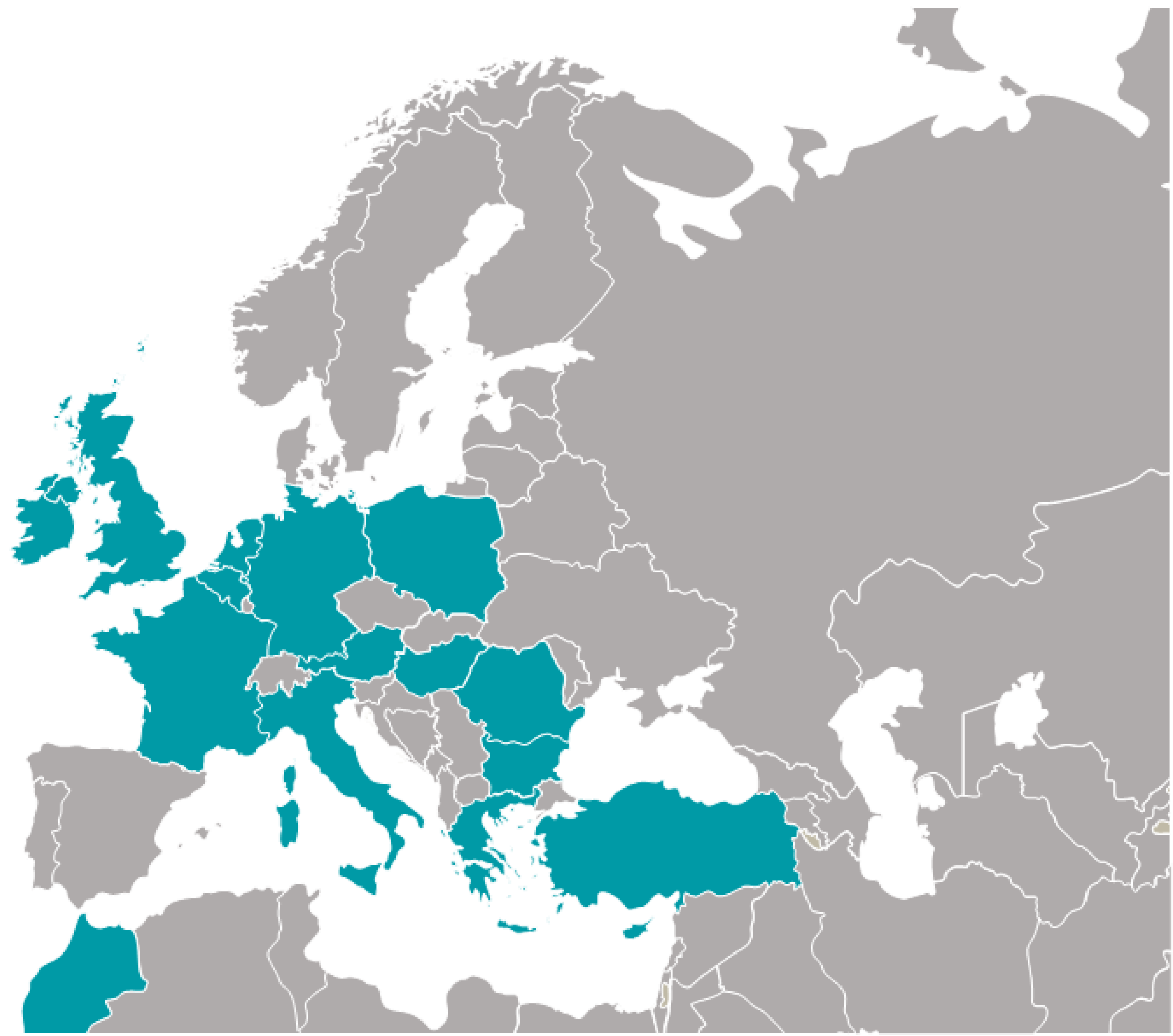
The direct link to the survey will be shared on the chat!

We will gather all your questions in the chat and pose it to our speakers!





Members

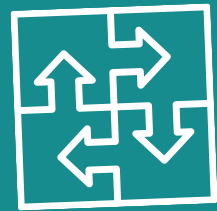


Approach



Facilitator → EXPLORE

Raise awareness of satellite applications to help professional communities in many sectors: from transport to risk management, from habitat protection to energy, from climate change to the IoT.



Matchmaker → CONNECT

Support potential end users of satellite applications by leveraging its vast network among space and non-space communities; understanding patterns and links and/or creating them for mutual benefits.

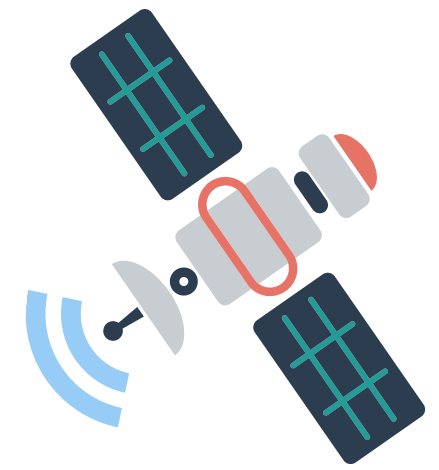


Adviser → INFORM

Provide feedback to decision-makers on possible measures to overcome obstacles in diffusing space-derived innovation in society.

Objectives

- Identify maritime users' needs and challenges and favour their interaction with service providers;
- Promote the benefits of satellite-based solutions for the maritime professional community
- Report back to institutions feedback on users' needs and define recommendations on obstacles in uptake



Space for Maritime-Use Cases

Central Command for Maritime Emergencies: monitoring sea pollution on German coasts using satellite information

- Technology: EO/SatNav
- Sector: Water monitoring/Law Enforcement
- User: Central Command for Maritime Emergencies

Challenge:

- Oil spills, threat to environment, economy, fishery, etc.
- Need to receive quick information for a fast reaction

Satellite Solution:

CleanSeaNet, an oil spill and vessel detection service based on satellite data provided by EMSA

Result:

- Improved CCME surveillance capacity by being better informed of incidents
- Fast reaction to incidents and better EU coordination



Space for Maritime-Use Cases

Finland: All-year-round open ports due to efficient ice-breaking services

- Technology: EO/SatNav
- Sector: Traffic Management
- User: Finnish Transport Agency

Liikennevirasto



Challenge:

- Finland is the only country in the world where all ports freeze in winter
- Keeping ports open and navigation fluid during winter months

Satellite Solution:

- Radar satellite images offer wide-area coverage, day and night and in all weather conditions (RS-1, Envisat, Radarsat-1 and 2, Sentinel 1)
- Satellite data combined with ice charts, weather maps, and in-situ observations to produce information available to each icebreaker captain and shared through system called IBNet

Result:

- Fleet's fuel consumption reduced
- Better route planning has reduced operational costs for the 20,000 ships travelling to the Finnish ports in an average winter

eurisy
ACTING COLLECTIVELY TO
BRIDGE SPACE AND SOCIETY

Find us:



www.eurisy.eu