

Satellite-based Services for Disaster Risk Management

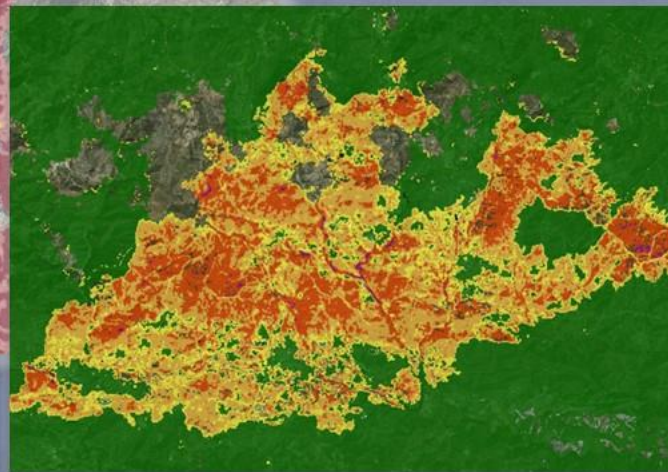
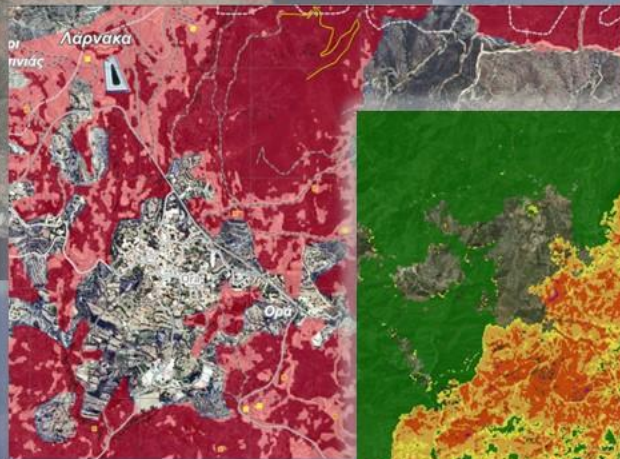
17th May 2023

9:30 - 15:30 EEST

HILTON NICOSIA

Achaion 1, Egkomi

Nicosia, Cyprus



In cooperation with the Department of Electronic Communications |
Deputy Ministry of Research, Innovation and Digital Policy



GOVSATCOM and disaster management

Georgios Synnefakis

GOVSATCOM Programme Manager, EUSPA

Space based solutions for disaster management

Disaster management, mitigation and prevention can rely on reliable space based services for:

- Telecommunications and
- PNT (Positioning, Navigation, Timing)

Space based services:

- Availability
- Resilience
- Stability
- High Accuracy



Why Satellite Communications fit Governmental needs?

- High availability
- Resilience
- Easy to set-up



Satellite Communications and GOVSATCOM use case families



CRISIS MANAGEMENT

SATCOM support critical governmental operations:

- ✓ Security
- ✓ Safety
- ✓ Disaster management



SURVEILLANCE



KEY INFRASTRUCTURE

Indicative users:

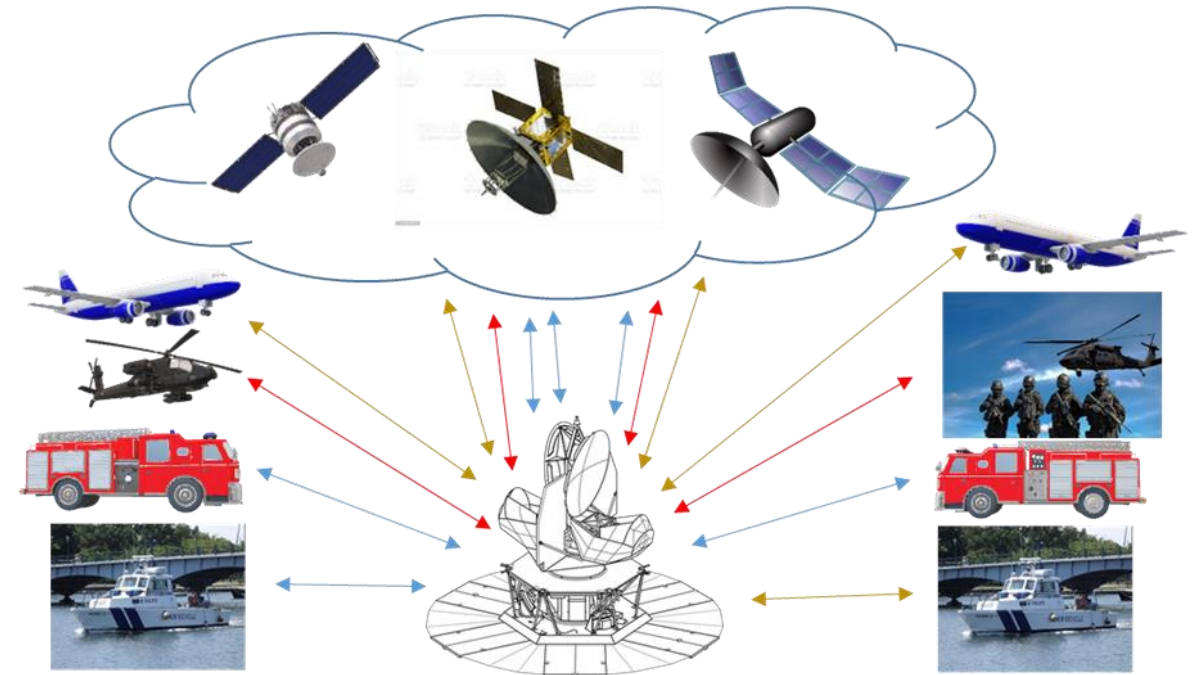
Civil protection, EU Member States Military forces, Border control, Police and Homeland Security Forces, Humanitarian aid responders, Search and Rescue, Diplomatic networks

GOVSATCOM

- ❖ Common Union pool with satcom resources
- ❖ Optimize the match between demand and supply
- ❖ Security features
- ❖ The pooled resources will be shared among the EU Member States and EU Institutions, based on a token system

GOVSATCOM will be the entry point for governmental users to share satcom resources

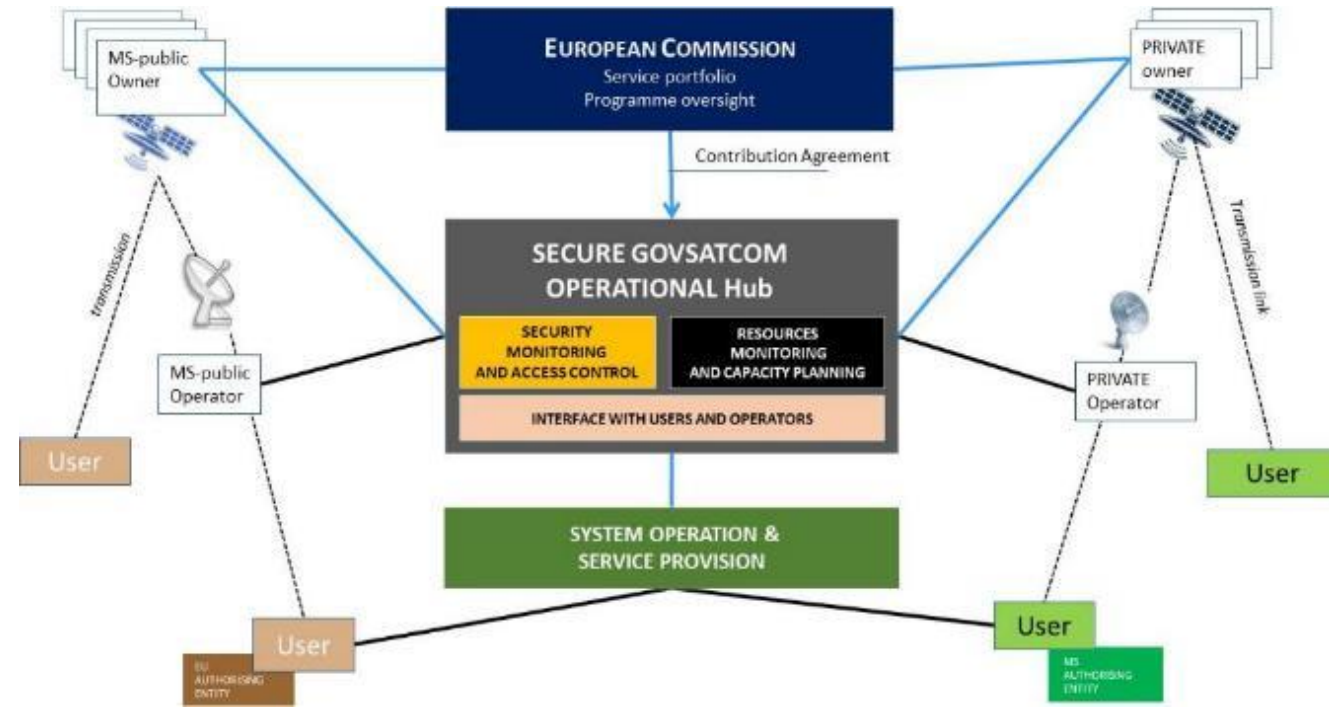
IRIS² services will be provided through the GOVSATCOM hubs



3 service categories:
Raw capacity service
Anchored capacity service
End to End service

GOVSATCOM Hubs

- Operational centre linking GOVSATCOM users with providers, in a secure manner.
- Combination of existing satellite capacities and services.
- User access to the GOVSATCOM capacities and services.
- EUSPA manages the procurement
- Tentative timeline:
 - Q2 2023 Start of Hub sites selection process
 - Q4 2024 GOVSATCOM Initial Services



European Union Governmental Satellite Communications (EU GOVSATCOM) Hubs GSA/IP/10/20

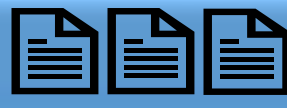
Tender

Contract Stage 1:

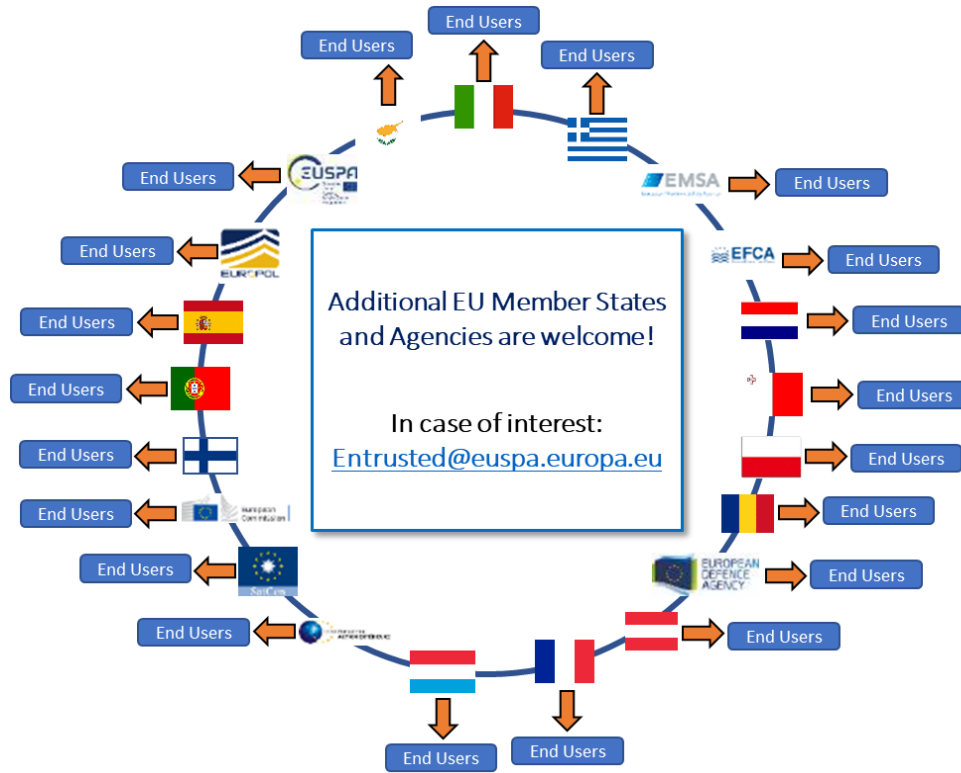
Preliminary Design

Contract Stage 2:

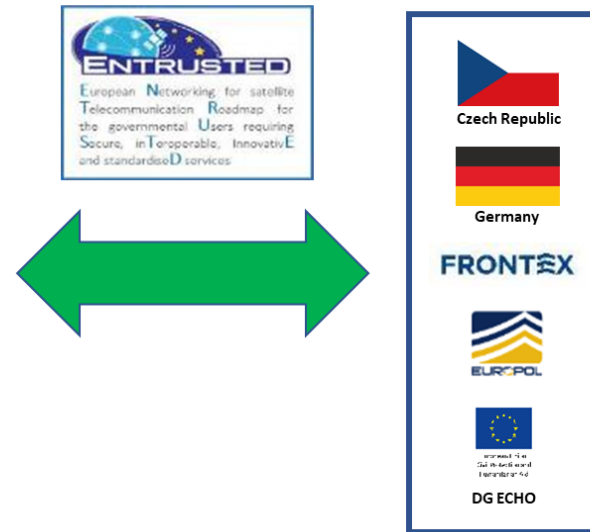
Development, qualification and final acceptance



ENTRUSTED: The user network



External collaborators



Establish collaboration and coordination among secure SatCom governmental users






Achieve common understanding on common needs and requirements

Analyse current and future secure SatCom User Technologies

Define a roadmap for Research and Innovation activities

Galileo, PNT services



	HAS	OSNMA	PRS
	High-accuracy service	Data Authenticated service	Fully protected service
	No auth./encryption	Nav Data authentication	Signal and Nav Data encryption
	Dedicated receiver needed ⚠	Enabled receiver needed ⚠	Dedicated receiver needed ⚠
	No keys required	Unclassified keys required	Classified keys required ⚠
	For all users	For all users	Access is regulated ⚠

Thank you!

