

The logo for POLSA (Polish Space Agency) is located in the top right corner. It consists of the letters 'P', 'O', 'L', 'S', and 'A' in a white, sans-serif font, with a white orbital line passing through the 'O'.

# EMPAWERING PUBLIC ADMINISTRATION IN POLAND WITH SATELLITE DATA SOLUTIONS

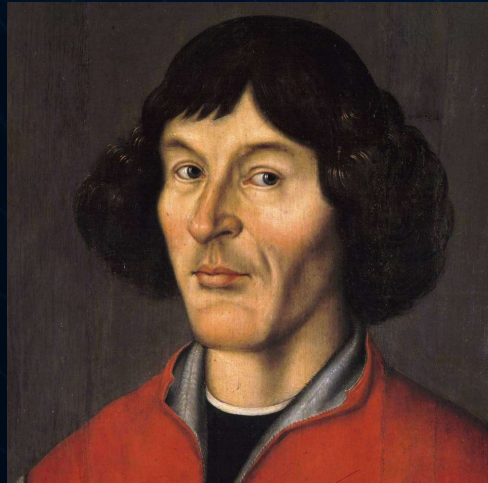
Earth Observation Department  
Polish Space Agency

27.10.2023  
EURISY Members' Corner

# POLISH SPACE SECTOR IN A NUTSHELL

## Heritage:

- 1973 – first instrument in orbit
- 1978 – first cosmonaut
- 2012 – first satellite



Nicolaus Copernicus  
„On the Revolutions of the  
Heavenly Spheres”

1543



## 10 years in ESA:

- ~450 entities registered in ESA STAR
- 540+ projects worth €190 million
- ~100 new technologies developed
- 12.000 employees in space sector

## Strengths:

- High innovativeness
- High quality workforce
- Proactive attitude

# ROLE OF POLISH SPACE AGENCY

- To support space industry and research organisations in building its technological competences and business position
- To encourage and support central and local government administration to use space science, technology and applications to deliver better services
- To manage and co-manage Poland's involvement in the European Space Agency
- To promote Polish space sector



# BARRIERS BY PUBLIC ADMINISTRATION



## OUR GOAL

FACILITATING USE OF SATELLITE AND GEOSPATIAL DATA FOR BETTER DECISION-MAKING

IMPROVING EFFECTIVENESS OF PUBLIC ADMINISTRATION WORK

BOOSTING THE SPACE MARKET IN POLAND

# POLISH SPACE ECOSYSTEM



User  
awareness



Infrastructure  
tools



Data,  
Products,  
Services

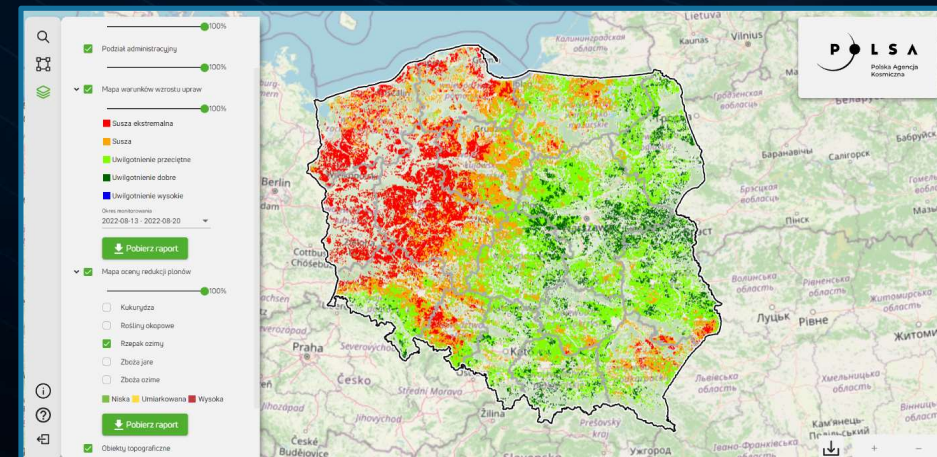


Legal  
support



# NATIONAL SATELLITE INFORMATION SYSTEM

- ▶ Platform for public administration
- ▶ Identification of user needs
- ▶ Access platform with some tools
- ▶ Data, products, services
- ▶ Marketplace for applications
- ▶ Cloud solution
- ▶ AI processing



# EARTH OBSERVATION SYSTEMS

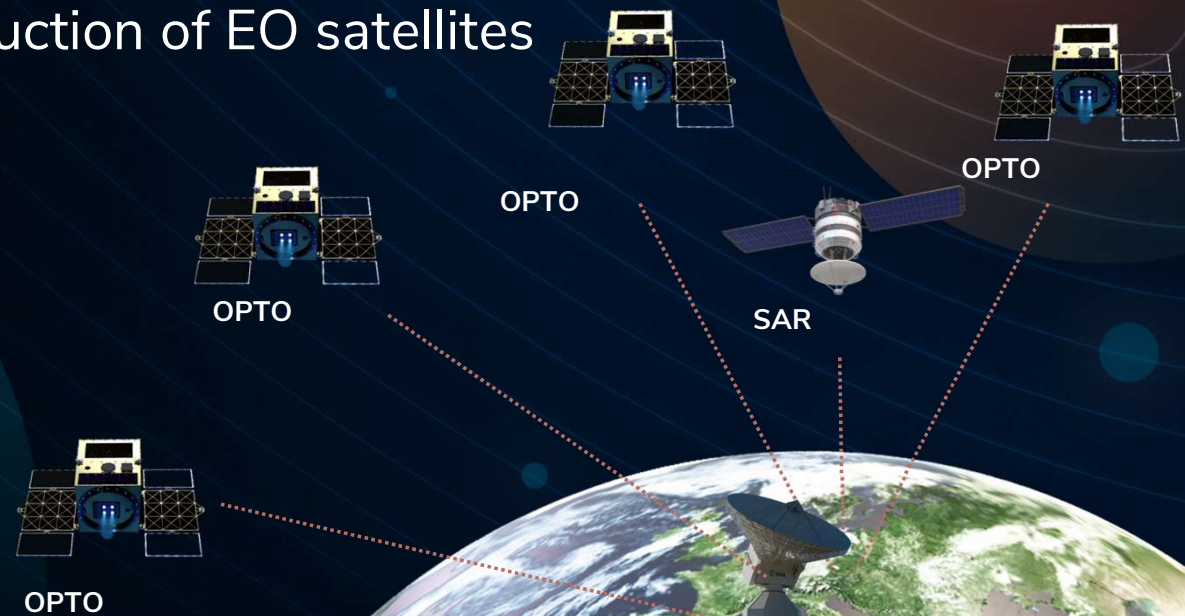
- ▶ Military University of Technology - 3 high-resolution optical nano satellites (~5 m) – military use and crises management
- ▶ EO Satellite System **MikroGlob** – MoD plans for national optical constellation of microsatellites - dual use
- ▶ MoD purchased 2 high-resolution **Pléiades** (~0,5 m) – military use and crises management
- ▶ Country Awareness Mission In Land Analysis – at least four (4) EO small optical and SAR satellites

# COUNTRY AWARENESS MISSION IN LAND ANALYSIS

Bilateral PL-ESA program of construction of EO satellites

## Goal:

- build competences of the Polish space sector in the field of production and integration of satellite systems
- provide high-resolution satellite data for administration, civil security, crises management





# FOSTERING CRISES AWARENESS AND MANAGEMENT

- Climate change leads to a critical increase in the scale of risks,
- Satellite solution can considerably foster the efficiency of response to threats,
- Poland has extensive experience and the willingness to play a significant role in the development of civil security solutions based on satellite data.



# CIVIL SECURITY – POLISH SPECIALISATION

- Experience of Government Centre for Security in building and exploring the geospatial System GISBN National Security in context of meeting needs of crisis management system
- Experience of polish security centres all levels in using innovating solutions during projects and activations of Crisis Information Centre Polish Academy of Sciences

## Civil Security Hub: User support center and testbed

- ensuring ongoing monitoring of risks and crisis situations
- program of tests, usability assessment, validation and certification for all innovative solutions

## **Build with synergy of polish bilateral program Camilla and Civil Security from Space programme (CSS)**

- Data from Camilla to furnish the system
- Ground segment to ensure infrastructure



**P O L S A**

The background is a dark blue space-themed illustration. It features several celestial bodies: a large teal planet on the left, a large brown planet with white rings on the right, and several smaller planets in shades of blue, purple, and green. A network of thin, light blue lines represents orbital paths or a star map. The overall aesthetic is clean and modern.